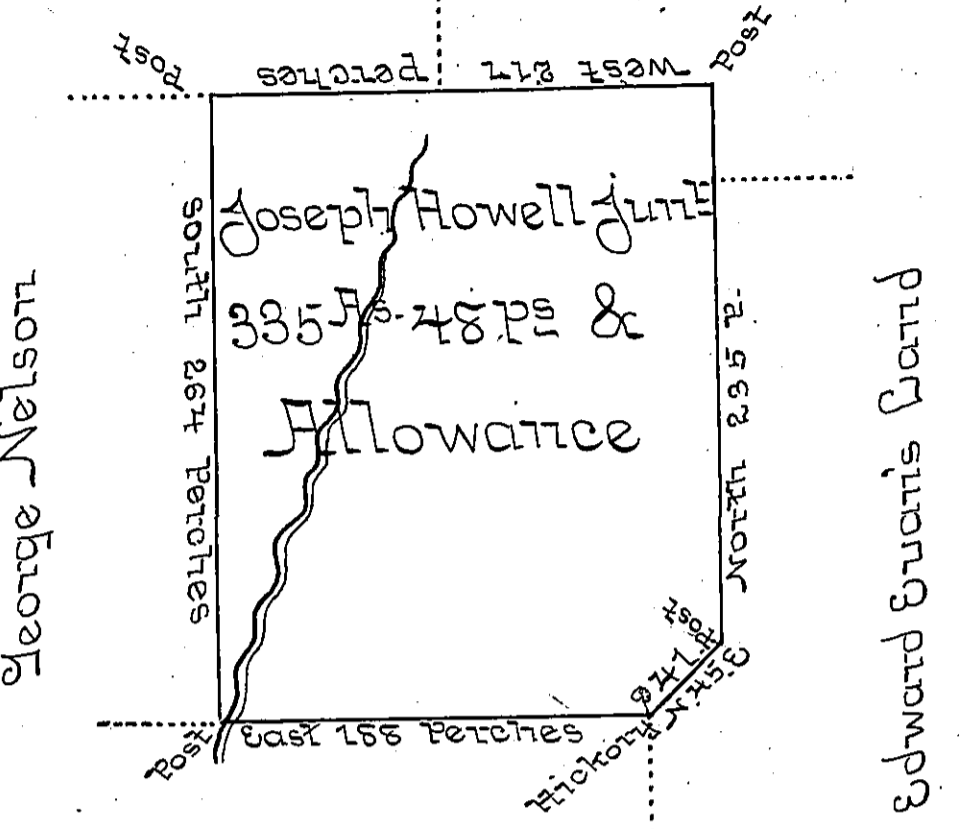


Page 14

Richard Smith June
Jacob S. Howell



Vacant Hilly Land

A Draught of a Tract of Land called Sugar Tree Grove (being part of a larger Tract of the same name) situate on the Waters of Conemough three quarters of a Mile West from William Holidays Improvement; about a Mile and an half S.W. from the S.W. corner of the Proprietary's Survey at the Chest adjoining Land of George Nelson, Jacob S. Howell Richard Smith June and Edward Evans in the County of Bedford containing three hundred and thirty five Acres & forty eight Perches and the usual Allowance of six Percent for Roads &c Surveyed the 22^d 23^d Days of June 1773. in pursuance of a Warrant granted to him the 13th Day of May in the same year by
 To John Lukens Esq^r }
 Surveyor General of } Thomas Smith D.S.
 Pennsylvania &c }

IN TESTIMONY that the above is a copy of the original remaining on file in the Department of Internal Affairs of Pennsylvania, made conformably to an Act of Assembly approved the 16th day of February, 1833, I have hereunto set my Hand and caused the Seal of said Department to be affixed at Harrisburg, this

8th day of October 1897.

James W. Pitts
 Secretary of Internal Affairs.